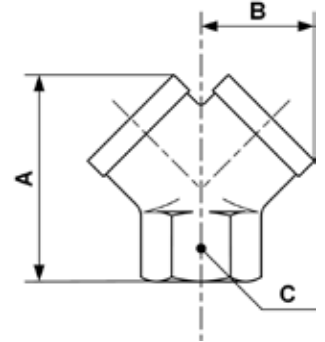


FITTINGS - Y PIECES

Female equal Y piece



Min/max operating pressure

0 / 218 psi

Part number	Female thread	Net weight (Kg)	Dim. A (inch)	Dim. B (inch)	Dim. C (inch)
Y38	G3/8	0,0458	1.46	0.81	0.79
Y12	G1/2	0.085	1.77	1.04	0.98